

# 2023 RECREATION GUIDE



## KIDS

WITH CAMPS,  
CONCERTS, FESTIVALS  
AND MORE, WE HAVE  
SOMETHING  
PLANNED FOR KIDS  
YOUNG IN AGE AND  
YOUNG AT HEART



## PARKS

4 PARKS WITH SHELTERS,  
FIELDS, PLAYGROUNDS,  
AND MORE, WE HAVE A  
WONDERFUL RECREATION  
INFRASTRUCTURE IN  
CHIPPEWA TOWNSHIP



## ADULTS

CONCERTS IN THE  
PARKS, RETIREES  
MEETUPS, BUS TRIPS,  
MYSTERY DINNERS,  
AND FESTIVALS OFFER  
GREAT EXPERIENCES  
FOR ALL AGES



# RECREATION

## facilities

Chippewa Township Parks & Recreation Department is home to beautiful outdoor spaces that provide the best recreational value for our residents and visitors.



### Veterans Park

1 Synthetic Turf Field

5 Grass Turf Fields

1 Multipurpose Field

Walking Trails

Fitness Court

Playground

Fieldhouse

(Community Room, 2 Locker Rooms, Public Restrooms)

2 Little League Baseball Fields



**NEW FITNESS  
FACILITY**

### Sahli Park

Catch & Release Pond

90 Acre Property

Pollinator Gardens

Swing Set



### Chippewa Park

Baseball Field

Softball Field

3 Picnic Shelters

Playground

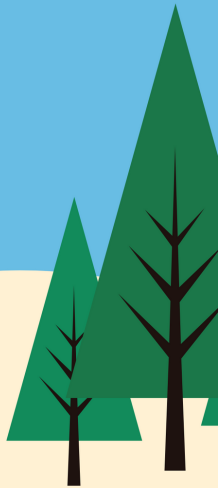
*Shelter Rentals start through  
RecDesk on March 1st at 10:00 am*

Summer



# KIDS CAMPS

REGISTRATION  
OPENS MARCH 1ST



**JUNE 12 –  
AUGUST 11**

**Morning, Afternoon &  
Evening Sessions**

**REGISTRATION FEES:  
\$15–\$25/KID PER DAY**

**ROTATE CHIPPEWA  
TOWNSHIP PARKS**

Chippewa Township  
Residents and Non-Residents  
are welcome to attend, so  
spread the word and save the  
date!

**Updated Information and Registration can be  
found at [www.chippewa-twp.org](http://www.chippewa-twp.org)**







CHIPPEWA TOWNSHIP  
PARKS AND RECREATION



# KNOTHOLE BASEBALL CAMP

JUNE

13

TO  
JULY

20

4-8

YEARS OLD

TUESDAY & THURSDAY MORNINGS

9 AM - Noon

**\$40 PER CHILD**

**\$20 FOR EACH ADDITIONAL CHILD IN THE SAME FAMILY**

Camp

**VETERAN'S PARK  
100 VETERANS PARK  
DRIVE, BEAVER  
FALLS PA 15010**

Register  
here

[www.chippewa-twp.org](http://www.chippewa-twp.org)

Chippewa Township Parks & Recreation

more information:

email [recreation@chippewa-twp.org](mailto:recreation@chippewa-twp.org)  
Call us 724-581-5495





CHIPPEWA TOWNSHIP

# Community Day

VENDORS, FOOD TRUCKS,  
LIVE MUSIC, CAR SHOW,  
GIVEAWAYS, GAMES,  
INFLATABLES, AND  
MORE...

Free  
Entry

Save The Date

July, 8, 2023

4:00 - 8:00 pm

AT VETERAN'S PARK

3848 37th Street Extension, Beaver Falls, PA 15010





# RETIRED CITIZENS MEET-UPS 2023

The last Tuesday of each month at 10:30 am, those over 55+ years of age are welcome to meet with our group. You don't have to be a Chippewa Township Resident, just someone who supports our community. Most events are FREE and include a snack and coffee! All meetings take place at Wright Fieldhouse (3848 37th Street Extension, Beaver Falls, PA 15010) unless otherwise noted.

## Monthly Themes

**January** - New Year, New You (or things to do!)

**February** - Fondue Fun

**March** - Spring Cleaning

**April** - Garden Prep & Planning

**May** - Sahli Park Tour & Talk: *Meet at Sahli Park*

**June** - Beat the Heat

**July** - BUS TRIP!

**August** - Financial Fall Planning

**September** - Fall Craft Day

**October** - Trick or Treat

**November/December** - Christmas Party





# Township Family Fun



**1 APRIL**

**EASTER EGG HUNT**

FUN GAMES  
FOOD  
EASTER BUNNY

IDEAL FOR KIDS AGE  
2-8, ALL KIDS  
WELCOME

CHIPPEWA PARK  
146 KLEIN STREET  
BEAVER FALLS, PA 15

EVENT  
STARTS AT  
1:00 PM

EGG HUNT  
STARTS AT  
1:30 PM

## MOVIE UNDER THE STARS

June 17 - July 15 - August 19



CHIPPEWA PARK, 146 KLEIN STREET,  
BEAVER FALLS, PA 15010

[www.chippewa-twp.org](http://www.chippewa-twp.org)  
watch the website for movie titles & date changes!

## Save the Date

### Kids Octoberfest

Saturday, October 14th



## A Very Merry Christmas in Chippewa

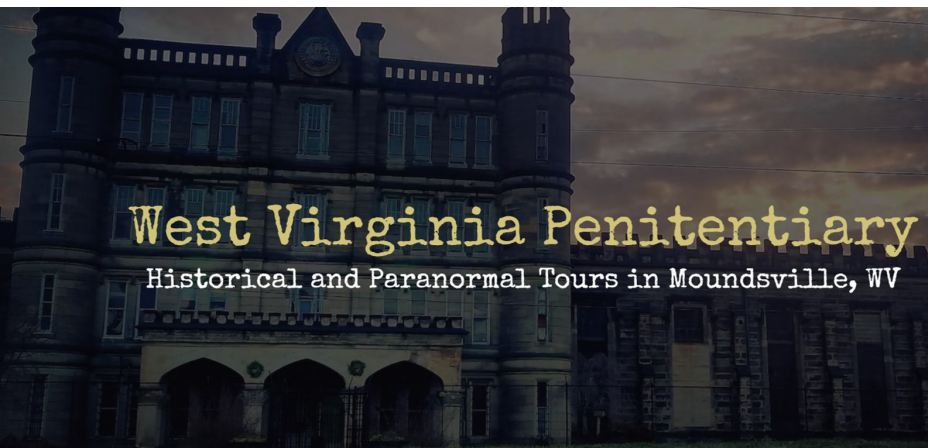
Saturday, December 2nd  
4-8pm

Wright Fields @ Veteran's Park

*Pictures with Santa, Food Trucks, Music, Inflatables, Light  
Displays, Vendors, Synthetic Ice Skating and more!*



# BUS TRIP



**Saturday, November 4, 2023**

**5:00 pm - Midnight**

**Twilight Tour of Moundsville Penitentiary**

**\$40/person - 40 Tickets Available**

*\*\*Tickets on sale September 1st*

## *Free Community Yoga*

Saturday, June 10th - 8:30 am

Sahli Park

Sunday, July 16th - 8:00 pm

Wright Fields Turf

Saturday, August 26th - 8:30 am

Sahli Park



*All classes taught by Meko Yoga and Wellness!*

## McKinley School House

### Chili Sale

Saturday, October 14th

4:00 pm - 6:00 pm

McKinley School House

## Pre-Sale & Day of Sales

*\*All proceeds benefit the McKinley School House  
Maintenance & Resoration*



## *Concerts in the park*

**June 16 - 7:00 pm**

**Beaver County Brass**

**Shelter #3**

**July 21 - 7:00 pm**

**Hopewell Big Band**

**Shelter #3**

**August 18 - 7:00 pm**

**Radiant Strings**

**Sahli Park**

# BUS

July 25, 2023

# TRIP



**Geneva on the Lake Wineries!**

**8:00 am - 8:00 pm**

**\$20/person**

**4 Wineries & Local Shopping**

*\*\*Registration & More*

*Information will be available in  
May 2023.*

>>>>>  
**BEAVER COUNTY**

<<<<<  
**PENNSYLVANIA**



**SATURDAY, JUNE 24, 2023**

**Veteran's Park Baseball Complex**  
**\$150/Team Registration Fee**

Prizes for Winners!

1st Place - \$1,000

2nd Place - \$500

3rd Place - \$250

*All teams are guaranteed 4 games*



The hidden gem of Chippewa Township, Sahli Park offers wonderful programs and a beautiful setting for a picnic, walk, or some fishing.



**SAHLI PARK**

CHIPPEWA TOWNSHIP

EST. 2012

# 2023 Programs

**March 23 - 6:00 pm**



Gardening for  
Hummingbirds

**Township Building**

**August 18 - 7:00 pm**

Radiant Strings  
Concert in the Park  
**Sahli Park**

**April 13 - 6:00 pm**

Gardening for Pollinators  
**Township Building**

**November 4 - 10:00 am**

The Great Pumpkin  
Smash  
**Sahli Park**

**May 20 - TBD**

Monarch Butterfly Day  
& Native Plant Sale  
**Sahli Park**

**May 30 - 10:30 am**

Retired Citizens  
Sahli Park Tour & Talk  
**Sahli Park**



## STORY WALK

Sahli Park & the Chippewa Branch of the Beaver County Library partner on a monthly story hike! Visit the park and read a story along the hike.



In addition to the programs on the left, Sahli Park offers multiple other programs throughout the year. Please keep an eye on the township website and the Sahli Park Facebook page for more information.



# Sponsorship Opportunities

Chippewa Township Parks & Recreation Department hosts events and activities that create, build, and inspire community building. Our events are made possible with the involvement of dedicated individuals and businesses whose sponsorship ensures that our traditions stay alive and thriving. Support our community through sponsorship and cement your place in the lives of our workers, residents, and greater community who love Chippewa Township!

## Event Sponsorships

We have a variety of event sponsorships available ranging from \$100 - \$5,000

### Event Sponsorship Available

Easter Egg Hunt

Movie Nights

Concerts in the Park

Yoga in the Park

**Community Day**

Kids Octoberfest

**Christmas in Chippewa**

Bus Trips

McKinley School House Chili Sale

## Memorial Bench & Table Program

Help enhance the park experience with a new bench or table in memory of someone special for your family and others, now and for generations to come.



\$1,000 Memorial Benches

\$2,000 Memorial Picnic Tables

## Facility Naming Rights

Get your business name out there with a facility sponsorship. Reach out to Parks & Recreation to discuss what opportunities are available and how to get involved.